

VENTO

LOUNGE ARMCHAIR



VENTO LOUNGE ARMCHAIR

Designer George Tsironas

Dimensions W77 x D77 x H64 - SH40 cm

Materials Powder coated aluminum frame
Seat and back cushions upholstered in fabric or eco leather
Back in eco leather

Weight 13.2 kg

Volume 0.38 m³



Sustainability

10DEKA prioritizes its ecological footprint by using recyclable materials and manufacturing practices to minimize the waste and the energy consumption, while continuously expanding the range of eco-friendly products. Our stringent adherence to global standards ensures that our products meet rigorous criteria for strength, durability, and safety.

Warranty

10DEKA offers a 2-year warranty on its products, valid ONLY with proper use. It excludes faults from normal wear and tear. If a manufacturing defect is found, the company will decide to repair or replace the product. For more information, please reach out to our sales team.



VENTO LOUNGE ARMCHAIR

Fabrics



F11 Coco 8001



F12 Grafito 8013



F13 Lino 8008



F14 Marfin 3741



F16 Perla 3735

F19 Brisa Blue
3736F20 Brisa Grey
3730

F28 Brisa 8011



F29 Optic 3934



F32 Aqua 8006



F39 Mineral 1442

F92 Umbra
20203F93 Nectar
20200F94 Scarlet
3947

F95 Apio 20201

F96 Gris
Porcelana 20099

F97 Salvia 20081



F98 Fossil 3659



F99 Alga 3667

F100 Stone Grey
3669F127 Ash Grey
PVC

F128 Greige PVC



F26 Clara 3950

F76 Mostaza
1732

F77 Integral 1734



F78 Piedra 1730



F84 Avera 1712



F85 Gris 1714



F87 Stone 1709



F88 Brisa 1706



F101 Musgo 1701

F102 Mostaza
1713

F103 Ice 20234

F104 Alberio
20238F105 Fresh
20239F106 Copper
20240F107 Denim
20242F113 Terra Stripes
00F114 Sand Stripes
96F115 Denim
Stripes 98F116 Terra
Pinstripes 18F117 Sand
Pinstripes 14F118 Denim
Pinstripes 16

Maintenance

Regularly vacuum your furniture using the upholstery nozzle to remove dust and prevent fluff and pilling. Occasionally, straighten the fabric with your hands. To smooth out wrinkles, use a steamer. If liquids spill, immediately blot the area with an absorbent napkin or cloth, dabbing gently towards the center of the stain. Avoid using concentrated detergents, bleach, ammonia, optical brighteners, or soaps meant for hard surfaces. Spot cleaning is not recommended as it can damage the fabric and cause color loss. For wool fabrics, most stains can be removed with lukewarm water and a clean, lint-free cloth. If needed, add a small amount of neutral detergent. Do not rub the material vigorously, as this can cause color loss and fabric damage. Using a hairdryer may help to prevent water marks. If a stain persists, consult a professional cleaner.

VENTO LOUNGE ARMCHAIR

Fabrics



F89 Gris 1742



F90 Glacier 1740



F91 Grafito 1739

F111 Ottoman
Apio 20069F112 Ottoman
Umbra 20071

F119 Sky 01



F120 Sky 22



F121 Sky 03



F122 Sky 07



F123 Sky 11



F124 Sky 23



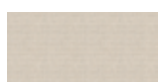
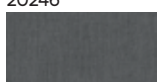
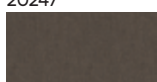
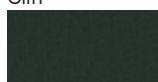
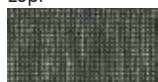
F125 Sky 20



F126 Sky 21

F108 Papyrus
20246F109 Grey Sand
20247

F110 Optik 20245

CLI B123 Obvious
CliffCLI B126 Slate
CliffCLI B128 Jacket
CliffCLI B129 Petra
CliffCLI B131 Fir
CliffLOP2 R079 Bud
LopiLOP2 R081 Fawn
LopiLOP2 R082 Pepper
LopiLOP2 R085 Viper
LopiLOP2 R086 Fossil
LopiSLO 19011 Farafra
SlowSLO 19103 Alezan
SlowSLO 19106 Fern
SlowSLO 19107 Spirea
Slow

Eco Leather



L1 Beige



L2 Beige Olive



L3 Ivory



L4 White



L5 Blue



L6 Graphite



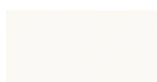
L7 Light Grey



L21 Ebony



L22 Ash



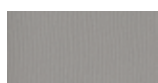
L23 Ice



L24 Ocean



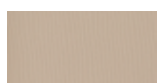
L25 Pearl



L26 Shark



L27 Terracotta



L28 Toffee



L29 Walnut

VENTO LOUNGE ARMCHAIR

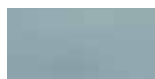
Eco Leather-Vento



L15 Dove 07



L16 Cream 02



L18 Seaform 09



L19 Walnut 13

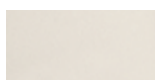


L20 Chestnut 14

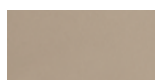
Frame Colors



White



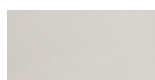
Sabbia



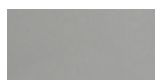
Beige



Dark Brown



Light Grey



Cloud Grey



Graphite



Turquoise Blue



Royal Blue



Denim Blue



Olive Green



Saumon Orange



Rouge Beige



Rouge Royal



Tanami Red



Brown Amber